



# Train to Teach

East of England



# Why teach in the

## East of England?

### Essex

#### Living in Essex

Nearly 1.5 million people call Essex home, making it the second most populous county in England. Thanks to the size, location and geography of the county, there's a huge diversity to the places where people live. Essex has lots of different options for housing whether you're looking to rent or buy. Whether you want to live urban, rural or coastal, there are options to suit budgets of all kinds and prices that compare well to other parts of the Southeast.

The border with London is densely populated, and the South Essex Thames Gateway is an area of real economic growth. This southern part of the county is very different to the large rural areas of mid and north Essex – almost 75% of the county's land area is rolling farmland.

[Find out more](#) about living in Essex.

#### Why teach in Essex?

You'll find almost 600 schools in Essex - along our stunning coastline, throughout miles of picturesque countryside and in towns and resorts with characters all of their own. This is where to search and apply for jobs in all of these primary, secondary and special schools. From teachers, school leaders and bursars to administration, catering and support staff, there's a huge range of roles, in schools that come in all shapes and sizes.

[Find out more](#) about teaching in Essex.



### West Essex



## Living and working in West Essex

West Essex covers the districts of Uttlesford, Braintree, Harlow, Epping Forest, and Chelmsford. This area is an excellent place to live and teach. It has some wonderful market towns, museums, historic sites, stately homes, nature reserves, outdoor activities, and a variety of entertainment venues to suit all ages.

If this isn't enough to convince you, there are fast public transport routes into London and rural living available in the countryside, historic market towns and suburbs. West Essex has a bit of everything.

West Essex schools all have something diverse to offer. From small village primaries to large urban comprehensives, there's a vast diversity of schools, many offer outstanding provision. County wide, the standards and expectations in Essex remain high and this is great place to learn to teach.

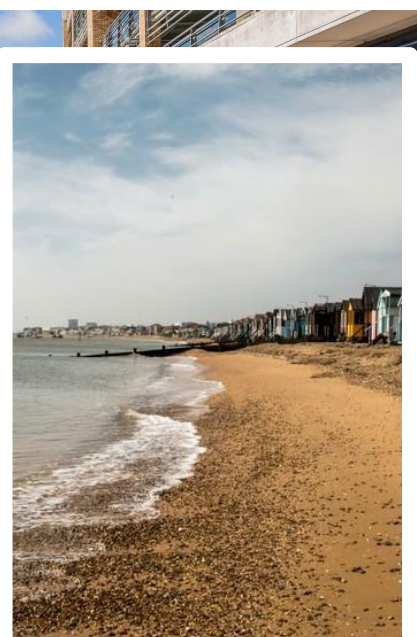
For those thinking of moving out of London, West Essex offers a wonderful quality of life, variety of different types of schools and more affordable property.

West Essex schools work closely together through a range of networks which support early career teachers in their training and development. There is a wonderful sense of training teachers to teach locally and supporting them to thrive and stay in this part of the county. Schools in the region invest in their staff.



## Southend

### Living and working in Southend





Southend-on-Sea is a fabulous place to live and work. There is real community strength in the family of schools that are working together in Southend to bring about the advantages that high quality education provides.

The diversity of schools in Southend is also unique for a small authority. With just 52 schools in total, contributing to the strong community approach. Our 33 primary schools are comprised of small infant schools to large primaries, including Catholic and CE faith schools. We have 6 special schools, including a BESD College that includes a PRU, and amongst our secondary schools we have 4 grammar schools, 2 Catholic high schools and high performing comprehensives.

Southend is a lively, thriving town with seven miles of award-winning beaches and coastal nature reserves. There are more than 80 parks and green spaces and 14 conservation areas. The borough is also home to the longest leisure pier in the world.

Southend-on-Sea is the one of the largest conurbations in the East of England and the closest seaside resort to London. It is located on the north side of the Thames estuary approximately 40 miles east of central London. There are two rail lines to London which is less than an hour away. Our rapidly developing London Southend Airport offers flights to a growing number of destinations throughout Europe.


[Find out more](#) about living and working in Southend.

## Thurrock

### Why teach in Thurrock?

Lying on the southern tip of Essex and against the bank of the River Thames, Thurrock is an ideal place to build your teaching career and offers a great quality of life on your doorstep.

Whether you are taking your first position as an NQT, looking to take on extra responsibility, or you're keen to become a middle or senior leader, Thurrock offers you the commitment and support



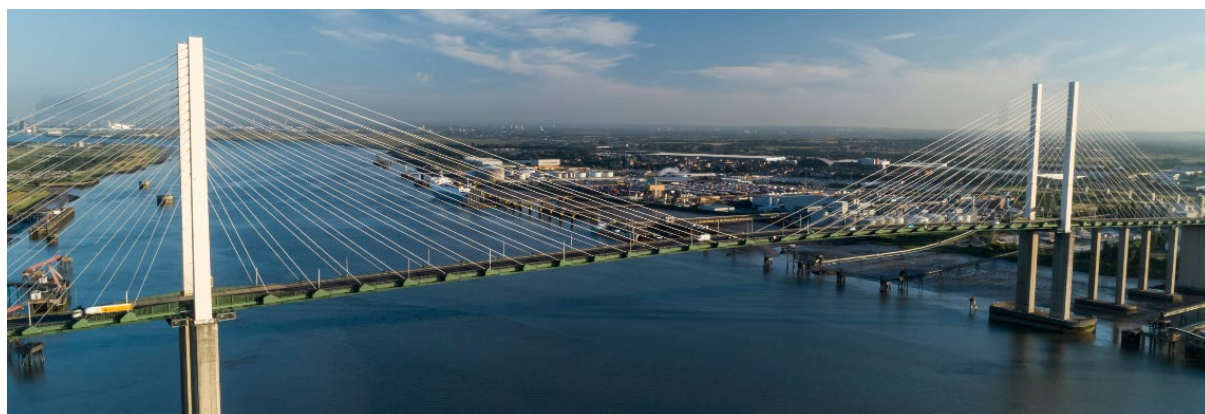
to deliver your ambitions. Teachers in Thurrock will experience a wide range of school settings, from village schools to town centre academies, all within a 10-mile radius.

Thurrock's education sector is a close-knit network, providing the opportunity to get to know other teachers both professionally and socially. Despite the majority of schools being academies, the local authority maintains a strong and close working relationship with all schools and is committed to continually improving standards for all its children.

High quality teachers are needed to continue the rapid improvement that Thurrock schools have achieved so far. Thurrock schools continue to improve with a large proportion of schools now judged to be good or outstanding by Ofsted.

£100 million will be invested in our schools including building two new secondary schools and improving Treetops Special Free School. The borough has several new schools and will require many additional primary and secondary school teachers and subsequently new leadership teams to support those schools.

[Find out more](#) about living in Thurrock.



## Tendring

### Living in Tendring

The Tendring peninsula is nick-named 'the Sunshine Coast' - with the long stretches of sandy beaches such as Claton, Holland-on-sea, Frinton and Walton-on-the-Naze you will never be short of a place to soak up the sunshine in a part of the UK famed for its lack of rainfall. There is plenty of entertainment on hand on the beaches too, with famous piers, boat-trips to watch seals and other wild-life and view the now iconic windfarms which grace the horizon. The Tendring area also boasts many woodlands and unspoilt stretches of countryside to walk and relax in, whilst town centres offer quirky sea-side experiences reminiscent of the heyday of the UK seaside holiday. Accommodation is very reasonable and plentiful in the Tendring area too, from quaint old English

Cottages, through to Edwardian Sea front town houses, to modern developments offering all 'mod-cons'. There are strong and plentiful transport links to Colchester, London and beyond and easy access to Stansted airport.

[Find out more](#) about living in Tendring.

### Training in Tendring

The primary and secondary schools in this area offer a unique glimpse into rural and small-town life in the UK, and an opportunity to contribute to the life-chances of children and young people with less access to opportunities offered to town and city dwellers. However, this is an area that will give you fantastic experiences in the classroom and a real focus on



meeting the needs of an often overlooked community within education.

## Colchester

### Living in Colchester

Training to teach in Colchester and surrounding areas offers the chance to live in or near England's oldest recorded town with its iconic castle and museums, award-winning galleries, such as First-site, and a plethora of other historic buildings and heritage locations on your doorstep where you can arrange visits and glean information to enrich your teaching and enhance your life!

Colchester town offers a vibrant and diverse shopping experience, with many independent and national chains and a lively restaurant and entertainment sector. Colchester was recently awarded city status, and opportunities for living, working and recreation in the area are plentiful.

There are great transport links, with London and Cambridge being 1 hour by train and 2 airports (Southend and Stansted) being an easy striking distance from the town.

[Find out more](#) about living in Colchester.

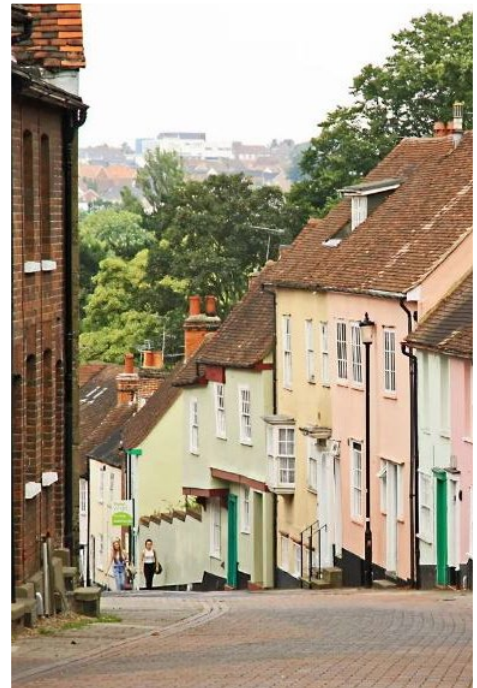


## Training in Colchester

Opportunities for training are offered by highly experienced and professional local and national providers.

There are more than 70 primary schools and 19 secondary schools in the areas, and these include grammar and independent schools. Colchester has some of the country's highest achieving sixth forms in the area, and our local SEND schools are expert practitioners offering training and support to mainstream partners.

A vast majority of these schools are experienced in offering initial teacher training placements, and supporting Early Career Teachers, and local teachers rate the training and employment experiences very highly.



## Suffolk

### Living in Suffolk

Suffolk has a fast-growing reputation as a desirable place to live with its mix of vibrant towns, historic buildings, fascinating villages, expansive heath, and coast. The main town, Ipswich is rich in both agricultural and maritime history and offers an exciting quayside culture with many places to eat, drink and enjoy the waterside experience, whilst the centre of the town offers more great places to shop eat, drink, and two extensive parklands open to the public for picnics and recreation.



Ipswich is a diverse town with residents representing communities from the entire spectrum of UK ethnicities. This contributes to a vibrant culture with many opportunities to engage in rich experiences of theatre, art, culture, food, and drink. Accommodation is plentiful, affordable, and varied and transport links to London and Norwich are regular. Norwich, Stansted, and Luton airport are within striking distance.

[Find out more](#) about living in Suffolk.



## Training in Suffolk

Training in Suffolk offers the whole range of experience - from larger, town-based comprehensives, to some of the smallest rural primaries in the country. You can gain significant experience of teaching in schools where a large proportion of students have English as an Additional Language, whilst you may also teach in schools which are far smaller and geographically remote than the national average. There are great employment opportunities too, as the Suffolk area recruits over 300 Early Career Teachers every year.

# Babergh

## Living in Babergh

The Mid Suffolk and Babergh districts have some of the most beautiful countryside and interesting towns and villages in the UK. The numerous parks, open spaces and nature reserves are homes for an abundance of wildlife and many rare species. Small rural communities offer great support to new residents and an abundance of local opportunities, farmers markets, craft events, country fairs and community-based events. Accommodation is varied and reasonably priced compared to the towns and cities of the region.

[Find out more](#) about living in Babergh.

## Training in Babergh

The primary and secondary schools in this area offer a unique glimpse into rural and small-town life in the UK, and an opportunity to contribute to the life-chances of children and young people with less access to opportunities offered to town and city dwellers. However, this is an area that will give you fantastic experiences in the classroom and a real focus on meeting the needs of an often-overlooked community within education.

# Norfolk

## Why live in Norfolk?

Live in Norfolk, a beautiful county with excellent transport links and a city home to the happiest place to work in England.

Norfolk is a beautiful county with over 90 miles of unspoilt coastline, stunning countryside, the Broads and historical market towns, as well as a number of traditional seaside resorts. The county's capital, Norwich, is a cosmopolitan city mixing rich heritage with a live social and culture scene. Norwich has good




transport links with Cambridge and London. There are also direct train links to the Midlands. Norwich International Airport is located on the outskirts of the city and London is easily accessed by road via the A11. Not only that, but housing costs and the cost of living are substantially cheaper than areas such as London, making it not just a pleasant place to live, but an economically savvy one too!

[Find out more](#) about living in Norfolk.

## Why teach in Norfolk?

Teach in Norfolk and you can experience a wide range of school settings. Norfolk's educational landscape, like many other regions across the country, is diverse. A number of schools have now become academies or left to become members of academy groups.



A photograph showing the hands and arms of several students sitting at a white table, working on papers. One student on the right is wearing a black watch.

Other schools have become free schools. Some schools have remained with Norfolk Local Authority, and these are called maintained schools. There are a number of independent (private) schools across the county, including several in the city of Norwich. Norfolk is also home to Wymondham College, the UK's largest remaining state boarding school.

Teach in Norfolk and you can make a real difference to the lives of young people in the region. Not only is the educational landscape diverse, but so too are the communities which these schools serve. In Norfolk, 15 areas are among the richest 10% in the country, while 3 are in the poorest 10%. This disparity is a key focus for the schools in these areas and their leaders.

## Cambridgeshire and Peterborough

### Living in Cambridgeshire and Peterborough

From the beautiful, richly fertile fen and countryside of the north and east of the county to the vibrant diversity of our two cities, Cambridgeshire and Peterborough is a special part of the UK. Much of the county is made of a booming agricultural community, supported by busy market towns, but with centres of innovation in medical and healthcare technology, two cathedrals (in Ely and Peterborough) and two universities in Cambridge, there is a wide variety of opportunity in our thriving and diverse communities.



### Training in Cambridgeshire and Peterborough

Just like the county itself there is a wide range of schools in Cambridgeshire and Peterborough, ranging from the tiniest, rural primaries to large, inner-city academies, and everything in between.

There are a range of teacher training providers, in both university and school sectors, with a very long history of learning, and strong links to a thriving network of partnership schools. No wonder so many people who train in Cambridgeshire and Peterborough stay there!

# Train to Teach

## East of England

### Provider Directory

Provider	Page	Teaching School Hub
BEC Teacher Training	<a href="#">16</a>	Chafford Hundred Teaching School Hub & Saffron Teaching School Hub
Benfleet TSA (with TES)	<a href="#">16</a>	Chafford Hundred Teaching School Hub
Cambridge Partnership	<a href="#">17</a>	Cambridgeshire and Peterborough Teaching School Hub
Cambridge University Faculty of Education	<a href="#">16</a>	Cambridgeshire and Peterborough Teaching School Hub, Saffron Teaching School Hub and Unity Teaching School Hub
CTSN SCITT	<a href="#">17</a>	Saffron Teaching School Hub, Cambridgeshire and Peterborough Teaching School Hub & Unity Teaching School Hub
Colchester Teacher Training Consortium	<a href="#">18</a>	Alpha Teaching School Hub and Unity Teaching School Hub
East SCITT	<a href="#">18</a>	Unity Teaching School Hub
Essex Primary SCITT	<a href="#">18</a>	Saffron Teaching School Hub
Essex School Direct	<a href="#">19</a>	Saffron Teaching School Hub
Essex & Thames SCITT	<a href="#">19</a>	Chafford Hundred Teaching School Hub & Saffron Teaching School Hub
Forest Independent Primary Collegiate	<a href="#">20</a>	Saffron Teaching School Hub
Harlow Teacher Training Partnership	<a href="#">20</a>	Saffron Teaching School Hub
Mid Essex ITT	<a href="#">20</a>	Chafford Hundred Teaching School Hub & Saffron Teaching School Hub
NlOT @ Harris Initial Teacher Education	<a href="#">21</a>	Chafford Hundred Teaching School Hub
NlOT @ Inspiration Trust	<a href="#">21</a>	Inspiration Teaching School Hub
Norfolk Teacher Training Centre (NTTC)	<a href="#">21</a>	Julian Teaching School Hub
Suffolk & Norfolk SCITT	<a href="#">22</a>	Julian Teaching School Hub, Alpha Teaching School Hub, and Unity Teaching School Hub
Teach East	<a href="#">22</a>	Cambridgeshire and Peterborough Teaching School Hub
Teach First	<a href="#">22</a>	Saffron Teaching School Hub
Teach Thurrock Primary Partnership	<a href="#">23</a>	Chafford Hundred Teaching School Hub
TES Institute	<a href="#">23</a>	Saffron Teaching School Hub
The OAKS Suffolk	<a href="#">23</a>	Unity Teaching School Hub, Alpha Teaching School Hub & Saffron Teaching School Hub
University of East Anglia	<a href="#">24</a>	Julian Teaching School Hub
West Essex SCITT	<a href="#">24</a>	Saffron Teaching School Hub

# Initial Teacher Training Providers

Here are the Initial Teacher Training providers in the East of England. Use the links below to find out more about them and their upcoming events.

## BEC Teacher Training

Based in Wickford, we have 26 years' experience working with 60 local schools to provide high quality teacher training in South and Central Essex.



**BEC  
TEACHER  
TRAINING**



01268 477611



[Louise@billericayscitt.com](mailto:Louise@billericayscitt.com)



<https://www.billericayscitt.com>

### Upcoming Events

Contact us to join our popular online recruitment sessions or come along on Tuesday 10th January at Greensward Academy Hockley.

## Benfleet Team Supporting All (BTSA)



01268 754137



[mhoward@theappletonschool.org](mailto:mhoward@theappletonschool.org)



<http://www.btsa.uk>



**BENFLEET TEAM  
SUPPORTING ALL**

## Cambridge University Faculty of Education



**UNIVERSITY OF  
CAMBRIDGE**



01223 767600



[reception@educ.cam.ac.uk](mailto:reception@educ.cam.ac.uk)



<https://www.educ.cam.ac.uk/courses/pgce>

## The Cambridge Partnership



01223491630



[Info@campartnership.org](mailto:Info@campartnership.org)



<https://campartnership.org>



## CTSN SCITT



01223 262503 (EXT 223)



[scitt@catrust.co.uk](mailto:scitt@catrust.co.uk)



<https://ctsncscitt.info>



Primary: [AWilkinson@camteach.org.uk](mailto:AWilkinson@camteach.org.uk)



Secondary: [ABlagona@tgschool.net](mailto:ABlagona@tgschool.net)



Cross-phase: [MLee@catrust.co.uk](mailto:MLee@catrust.co.uk)

### Upcoming Events

#### Coffee & Chat

12th January 2023 15:30 – 16:30

Book via Eventbrite [here](#).

#### Coffee & Chat

22nd February 2023 15:30 – 16:30

Book via Eventbrite [here](#).

#### Train to Teach information evening

31st January 2023 18:00 – 19:00

Book via Eventbrite [here](#).

#### Train to Teach information evening

21st March 2023 18:00 – 19:00

Book via Eventbrite [here](#).

## Colchester Teacher Training Consortium (CTTC)

Established in 2003, CTTC works in partnership with over 60 schools and colleges across North Essex, Suffolk & Southend.





01206 364728



[enquiries@colchesterttc.org.uk](mailto:enquiries@colchesterttc.org.uk)



<https://www.colchesterttc.org.uk/>

### Upcoming Events

CTTC Open Evening

Thursday 19th January 2023, 5-7pm

Face to Face at CTTC, Colchester

CTTC Open Evening

Thursday 27th April 2023, 5-7pm

Face to Face at CTTC, Colchester

### East SCITT



01473 624855 (EXT 1254)



[jennyellis@eastscitt.co.uk](mailto:jennyellis@eastscitt.co.uk)



[www.eastscitt.co.uk](http://www.eastscitt.co.uk)



### Essex Primary SCITT



07738 885759



[caroline@essexprimaryscitt.co.uk](mailto:caroline@essexprimaryscitt.co.uk)



[www.essexprimaryscitt.co.uk](http://www.essexprimaryscitt.co.uk)



## Essex School Direct



**ESSEX SCHOOL DIRECT**

with **tes**  
institute



0208 498 6718



[Teach@essexschoolirect.com](mailto:Teach@essexschoolirect.com)



<https://www.essexschoolirect.com>

### Upcoming Events

ITT Recruitment Evening  
21st February 2023 19:30 – 21:00  
[Join Zoom Meeting](#)

ITT Recruitment Evening  
27th April 2023 19:30 – 21:00  
[Join Zoom Meeting](#)

## Essex & Thames SCITT



Essex and Thames is a partnership of 100+ schools that has been training excellent teachers across the East of England for almost 25 years.



01268 988580



[info@ete.org.uk](mailto:info@ete.org.uk)



<https://etpscitt.co.uk>

### Upcoming Events

Tuesday 22nd November 16.30 – 20:00

We will have a stand at Norwich Train to Teach event - come and see us!

Follow [this link](#) to register.

Wednesday 30th November 11:00 – 12:00

Do you have any questions regarding the application process or our course? Please join us over Zoom [here](#).

Monday 12th December 7pm-8

Would you like to discuss your options for teacher training? Come and chat to us online over Zoom [here](#).

## Forest Independent Primary Collegiate



01279 421 333



[admin@fipc.ac.uk](mailto:admin@fipc.ac.uk)



<https://fipc.ac.uk>



### Upcoming Events

Information events are shown on the [News and Events](#) page of our website and take place approximately every two weeks.

## Harlow Teacher Training Partnership

We train teachers in Harlow for Harlow and the surrounding areas.  
Working with [Forest Independent Primary Collegiate](#).



01279 425383



[Contact Us](#)



<https://harlowitt.weebly.com>



## Mid Essex ITT



01376 556 398



[admin@midessexteachertraining.com](mailto:admin@midessexteachertraining.com)



<https://www.midessexteachertraining.com>



### Upcoming Events

Click [here](#) Virtual one-to-one coffee appointments.

Click [here](#) for other events with Mid-Essex ITT.

### NIoT @ Inspiration Trust



01603 733446



[teaching@inspirationtrust.org](mailto:teaching@inspirationtrust.org)



<https://www.inspirationteachertraining.org>

inspiration  
trust

NATIONAL  
INSTITUTE  
of Teaching

### NIoT @ Harris Initial Teacher Education



Harris Federation  
Initial Teacher Education



0208 253 7758 & 0330 133 6300



[info@harrisschooldirect.com](mailto:info@harrisschooldirect.com) & [itt@niot.org.uk](mailto:itt@niot.org.uk)



<https://niot.org.uk>

#### Upcoming Events

Train to Teach with NIoT @ Harris Initial Teacher Education  
29<sup>th</sup> and 30<sup>th</sup> November, 6<sup>th</sup>, 9<sup>th</sup> and 12<sup>th</sup> December  
Click [here](#) to register.

NATIONAL  
INSTITUTE  
of Teaching

### Norfolk Teacher Training Centre



01603 773708



[Contact Us](#)



<https://www.norfolkttc.org.uk>



NORFOLK  
TEACHER  
TRAINING  
CENTRE

#### Upcoming Events

Teacher Training Open Evening  
9<sup>th</sup> January 2023 17:00 – 19:00  
To attend this event, please register [here](#)

## Suffolk & Norfolk SCITT (SNITT)



01473 265077



[enquiries@suffolkandnorfolkscitt.co.uk](mailto:enquiries@suffolkandnorfolkscitt.co.uk)



[www.suffolkandnorfolkscitt.co.uk](http://www.suffolkandnorfolkscitt.co.uk)



SUFFOLK & NORFOLK SCITT  
PERSONALISED, RELATIONAL, ETHICAL

### Upcoming Events

Please sign up via our website bookings page [here](#).

University of Suffolk

8<sup>th</sup> November 2022 6:30-8pm

Norwich Professional Development Centre

17<sup>th</sup> November 2022 6:30pm

Primary (Online)

1<sup>st</sup> December 2022 6pm-7pm

To book, click [here](#).

Secondary (Online)

6<sup>th</sup> December 2022 6pm-7pm

To book, click [here](#)

## Teach First



T020 3862 8000



[recruitment@teachfirst.org.uk](mailto:recruitment@teachfirst.org.uk)



[www.teachfirst.org.uk/training-programme](http://www.teachfirst.org.uk/training-programme)



## Teach East



01733 252235



[office@teacheast.org.uk](mailto:office@teacheast.org.uk)



[www.teacheast.org](http://www.teacheast.org)



## Teach Thurrock Primary Partnership



01708 852128



[andrea.parfett@catrust.org.uk](mailto:andrea.parfett@catrust.org.uk)



<https://www.dilkesacademy.org.uk/what-is-teach-thurrock>



## TES Institute



0114 397 2250



[sd-institute@tes.com](mailto:sd-institute@tes.com) & [apprenticeships@tes.com](mailto:apprenticeships@tes.com)



<https://www.tes.com/institute>



Tes Institute works in partnership to deliver ITT School Direct and Teacher Apprenticeships with the following partners. Find out more about [our partners](#).

**Essex School Direct** – Loughton, Havering, Chelmsford and Harlow areas

**Benfleet Team Supporting All** – Benfleet, Basildon, Canvey and Southend

**Thurrock Teacher Training Company** – training across Thurrock

**Havering Train to Teach** – training across Havering

**Plume Community Partnership** – training is Maldon< Chelmsford and North Essex

## The OAKS Suffolk



01787 375131



[OAKS\\_Suffolk@ormistonsudbury.co.uk](mailto:OAKS_Suffolk@ormistonsudbury.co.uk)



<https://www.theoaks.org.uk/hubs/suffolk/>



## University of East Anglia



01603 592855



[edu.pgce.admiss@uea.ac.uk](mailto:edu.pgce.admiss@uea.ac.uk)



[uea.co/UEAteachertraining](http://uea.co/UEAteachertraining)



**SCHOOL OF  
EDUCATION  
AND LIFELONG  
LEARNING**

### Upcoming Events

For more information and to register, click [here](#).

Primary PGCE Information Session  
Saturday 25 February 2023, 09:30 - 12:30

Secondary PGCE Information Session  
Thursday 2 March 2023, 16:00 - 19:00

## West Essex SCITT



020 3325 2809 (term time only)



[vsmullen@efspt.org](mailto:vsmullen@efspt.org)



<https://www.westessexscitt.co.uk>





## Your local Teaching School Hubs

Seven Teaching School Hubs across the East of England are working together on supporting those interested in training to teach. Teaching School Hubs are made up of the best schools, and multi academy trusts in the country and their role is to provide high quality training and development for all teachers at all stages of their careers. Teaching Schools Hubs support Initial Teacher Training through to leadership training, ensuring that all training is high quality and contains the latest evidence.

The Teaching School Hubs below are working with all Initial Teacher Training providers across the East of England to ensure recruitment and retention of our early career teachers.

Your local Teaching School Hub website is below which is a useful place to start your journey into applying to teach.

Please contact your local Teaching School Hub directly for more support on applying to teach.

Teaching School Hub	Areas
<a href="#">Alpha Teaching School Hub</a>	Tendring, Ipswich, Colchester, and Babergh
<a href="#">Cambridgeshire &amp; Peterborough Teaching School Hub</a>	Cambridgeshire and Peterborough
<a href="#">Chafford Hundred Teaching School Hub</a>	Basildon, Brentwood, Castle Point, Maldon, Rochford, Southend-on-Sea and Thurrock
<a href="#">Inspiration Teaching School Hub</a>	South Norfolk, Breckland, Great Yarmouth and Waveney
<a href="#">Julian Teaching School Hub</a>	Broadland, King's Lynn and West Norfolk, North Norfolk, and Norwich
<a href="#">Saffron Teaching School Hub</a>	Braintree, Chelmsford, Epping Forest, Harlow and Uttlesford
<a href="#">Unity Teaching School Hub</a>	Forest Heath, St Edmundsbury, Mid Suffolk and Suffolk Coastal