



# Train to Teach Essex

## East of England

**Monday 2<sup>nd</sup> December 2024**

This event is brought to you by the Essex Teaching School Hubs and  
the East of England Regional Network for ITT Providers

# Why teach in the

## East of England?

### Essex

#### Living in Essex

Nearly 1.5 million people call Essex home, making it the second most populous county in England. Thanks to the size, location and geography of the county, there's a huge diversity to the places where people live. Essex has lots of different options for housing whether you're looking to rent or buy. Whether you want to live urban, rural or coastal, there are options to suit budgets of all kinds and prices that compare well to other parts of the Southeast.

The border with London is densely populated, and the South Essex Thames Gateway is an area of real economic growth. This southern part of the county is very different to the large rural areas of mid and north Essex – almost 75% of the county's land area is rolling farmland.

[Find out more](#) about living in Essex.

#### Why teach in Essex?

You'll find almost 600 schools in Essex - along our stunning coastline, throughout miles of picturesque countryside and in towns and resorts with characters all of their own. This is where to search and apply for jobs in all of these primary, secondary and special schools. From teachers, school leaders and bursars to administration, catering and support staff, there's a huge range of roles, in schools that come in all shapes and sizes.

[Find out more](#) about teaching in Essex.



# West Essex

## Living and working in West Essex

West Essex covers the districts of Uttlesford, Braintree, Harlow, Epping Forest, and Chelmsford. This area is an excellent place to live and teach. It has some wonderful market towns, museums, historic sites, stately homes, nature reserves, outdoor activities, and a variety of entertainment venues to suit all ages.

If this isn't enough to convince you, there are fast public transport routes into London and rural living available in the countryside, historic market towns and suburbs. West Essex has a bit of everything.

West Essex schools all have something diverse to offer. From small village primaries to large urban comprehensives, there's a vast diversity of schools, many offer outstanding provision. County wide, the standards and expectations in Essex remain high and this is great place to learn to teach.

For those thinking of moving out of London, West Essex offers a wonderful quality of life, variety of different types of schools and more affordable property.

West Essex schools work closely together through a range of networks which support early career teachers in their training and development. There is a wonderful sense of training teachers to teach locally and supporting them to thrive and stay in this part of the county. Schools in the region invest in their staff.



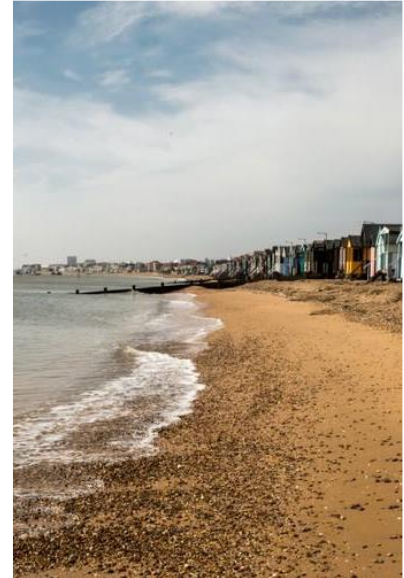


# Southend

## Living and working in Southend

Southend-on-Sea is a fabulous place to live and work. There is real community strength in the family of schools that are working together in Southend to bring about the advantages that high quality education provides.

The diversity of schools in Southend is also unique for a small authority. With just 52 schools in total, contributing to the strong community approach. Our 33 primary schools are comprised of small infant schools to large primaries, including Catholic and CE faith schools. We have 6 special schools, including a BESD College that includes a PRU, and amongst our secondary schools we have 4 grammar schools, 2 Catholic high schools and high performing comprehensives.



Southend is a lively, thriving town with seven miles of award-winning beaches and coastal nature reserves. There are more than 80 parks and green spaces and 14 conservation areas. The borough is also home to the longest leisure pier in the world.

Southend-on-Sea is the one of the largest conurbations in the East of England and the closest seaside resort to London. It is located on the north side of the Thames estuary approximately 40 miles east of central London. There are two rail lines to London which is less than an hour away. Our rapidly developing London Southend Airport offers flights to a growing number of destinations throughout Europe.

[Find out more](#) about living and working in Southend.



# Thurrock

## Why teach in Thurrock?

Lying on the southern tip of Essex and against the bank of the River Thames, Thurrock is an ideal place to build your teaching career and offers a great quality of life on your doorstep.

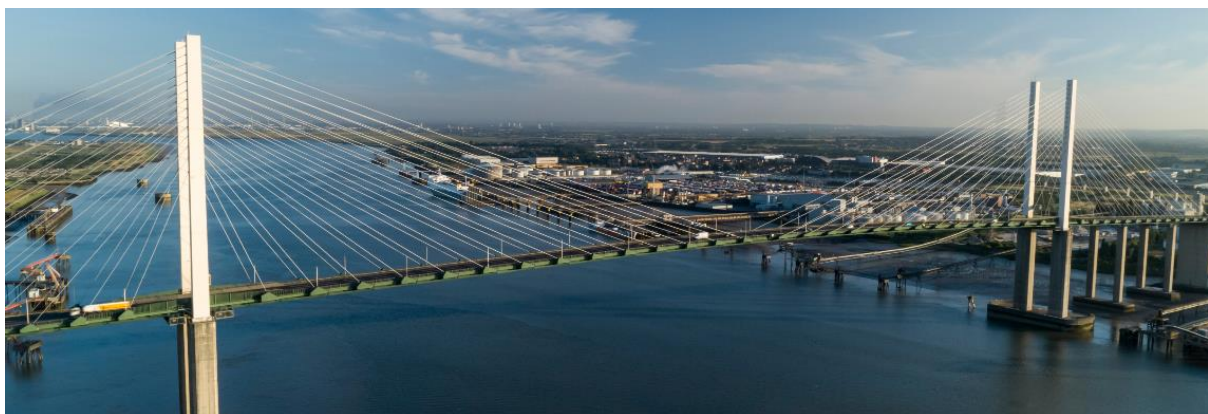
Whether you are taking your first position as an NQT, looking to take on extra responsibility, or you're keen to become a middle or senior leader, Thurrock offers you the commitment and support to deliver your ambitions. Teachers in Thurrock will experience a wide range of school settings, from village schools to town centre academies, all within a 10-mile radius.

Thurrock's education sector is a close-knit network, providing the opportunity to get to know other teachers both professionally and socially. Despite the majority of schools being academies, the local authority maintains a strong and close working relationship with all schools and is committed to continually improving standards for all its children.

High quality teachers are needed to continue the rapid improvement that Thurrock schools have achieved so far. Thurrock schools continue to improve with a large proportion of schools now judged to be good or outstanding by Ofsted.

£100 million will be invested in our schools including building two new secondary schools and improving Treetops Special Free School. The borough has several new schools and will require many additional primary and secondary school teachers and subsequently new leadership teams to support those schools.

[Find out more](#) about living in Thurrock.



# Tendring

## Living in Tendring

The Tendring peninsula is nick-named 'the Sunshine Coast' - with the long stretches of sandy beaches such as Claton, Holland-on-sea, Frinton and Walton-on-the-Naze you will never be short of a place to soak up the sunshine in a part of the UK famed for its lack of rainfall. There is plenty of entertainment on hand on the beaches too, with famous piers, boat-trips to watch seals and other wild-life and view the now iconic windfarms which grace the horizon. The Tendring area also boasts many woodlands and unspoilt stretches of countryside to walk and relax in, whilst town centres offer quirky sea-side experiences reminiscent of the heyday of the UK seaside holiday. Accommodation is very reasonable and plentiful in the Tendring area too, from quaint old English Cottages, through to Edwardian Sea front town houses, to modern developments offering all 'mod-cons'. There are strong and plentiful transport links to Colchester, London and beyond and easy access to Stansted airport.



[Find out more](#) about living in Tendring.

## Training in Tendring

The primary and secondary schools in this area offer a unique glimpse into rural and small-town life in the UK, and an opportunity to contribute to the life-chances of children and young people with less access to opportunities offered to town and city dwellers. However, this is an area that will give you fantastic experiences in the classroom and a real focus on meeting the needs of an often overlooked community within education.





# Colchester

## Living in Colchester

Training to teach in Colchester and surrounding areas offers the chance to live in or near England's oldest recorded town with its iconic castle and museums, award-winning galleries, such as First-site, and a plethora of other historic buildings and heritage locations on your doorstep where you can arrange visits and glean information to enrich your teaching and enhance your life!

Colchester town offers a vibrant and diverse shopping experience, with many independent and national chains and a lively restaurant and entertainment sector. Colchester was recently awarded city status, and opportunities for living, working and recreation in the area are plentiful.

There are great transport links, with London and Cambridge being 1 hour by train and 2 airports (Southend and Stansted) being an easy striking distance from the town.

[Find out more](#) about living in Colchester.

## Training in Colchester

Opportunities for training are offered by highly experienced and professional local and national providers.

There are more than 70 primary schools and 19 secondary schools in the areas, and these include grammar and independent schools. Colchester has some of the country's highest achieving sixth forms in the area, and our local SEND schools are expert practitioners offering training and support to mainstream partners.

A vast majority of these schools are experienced in offering initial teacher training placements, and supporting Early Career Teachers, and local teachers rate the training and employment experiences very highly.



# Train to Teach

## East of England

### Find your local Teaching School Hub in Essex

Three Teaching School Hubs across the East of England are working together on supporting those interested in training to teach. Teaching School Hubs are made up of the best schools, and multi academy trusts in the country and their role is to provide high quality training and development for all teachers at all stages of their careers. Teaching Schools Hubs support Initial Teacher Training through to leadership training, ensuring that all training is high quality and contains the latest evidence.

The Teaching School Hubs below are working with all Initial Teacher Training providers across the East of England to ensure recruitment and retention of our early career teachers.

Your local Teaching School Hub website is below which is a useful place to start your journey into applying to teach.

Please contact your local Teaching School Hub directly for more support on applying to teach.



[Chafford Hundred Teaching School Hub](#) covering:

Basildon, Brentwood, Castle Point, Maldon, Rochford, Southend-on-Sea and Thurrock



[Saffron Teaching School Hub](#) covering:

Braintree, Chelmsford, Epping Forest, Harlow and Uttlesford



[Unity Teaching School Hub](#) covering:

Babergh, Colchester, Ipswich and Tendring, plus Mid Suffolk, West Suffolk and East Suffolk



# Train to Teach

## East of England

### Provider Directory

Provider	Page
Advance Teacher Training (Ambition Institute)	10
Anglia Ruskin University ITT	10
CTSN SCITT & Essex Primary SCITT	10
Colchester Teacher Training Consortium	11
East SCITT	11
Essex & Thames SCITT	11
Mid Essex ITT	12
NESTT (Norfolk, Essex and Suffolk Teacher Training)	12
NlOT @ Harris Initial Teacher Education	12
NlOT @ Ormiston Teacher Training	12
Reach Teach	13
Teach First	13
TES Institute	13
West Essex SCITT	13

## Initial Teacher Training Providers

Here are the Initial Teacher Training providers in Essex. Use the links below to find out more about them and their upcoming events.

### Advance Teacher Training (Ambition Institute)



01223491630



[Info@campartnership.org](mailto:Info@campartnership.org)



<https://campartnership.org>

#### Upcoming Events

Monday 9th December 12-2pm - Online Drop-In session – join via link below

<https://us06web.zoom.us/j/87362957311?pwd=Xud2xJmFwfluahyqCQzXn4acvm7Lh8.1>

Meeting ID: 873 6295 7311

Passcode: 993131

23<sup>rd</sup> January 2023 – 6-7.30pm

3<sup>rd</sup> April 2025 – 6-7.30pm

### Anglia Ruskin University ITT



Anglia Ruskin  
University



01223 491630



[Info@campartnership.org](mailto:Info@campartnership.org)



<https://campartnership.org>

### CTSN SCITT & Essex Primary SCITT



01223 262503 (EXT 223)



[scitt@catrust.co.uk](mailto:scitt@catrust.co.uk)



<https://ctsncscitt.info>



Essex  
Primary SCITT

## Colchester Teacher Training Consortium (CTTC)

Established in 2003, CTTC works in partnership with over 100 schools and colleges across Essex and Suffolk to offer both Primary and Secondary teacher training.



01206 364728



[enquiries@colchesterttc.org.uk](mailto:enquiries@colchesterttc.org.uk)



<https://www.colchesterttc.org.uk/>

### Upcoming Events

Wednesday 15th January 2025, 5pm – 7pm

Thursday 24th April 2025, 5pm – 7pm

## East SCITT



01473 624855 (EXT 1254)



[jennyellis@eastscitt.co.uk](mailto:jennyellis@eastscitt.co.uk)



[www.eastscitt.co.uk](http://www.eastscitt.co.uk)



## Essex & Thames SCITT



Essex and Thames is a partnership of 100+ schools that has been training excellent teachers across the East of England for almost 25 years.



01268 988580



[info@ete.org.uk](mailto:info@ete.org.uk)



<https://etpscitt.co.uk>



### Mid Essex ITT

**MID-ESSEX** I T T  
INITIAL TEACHER TRAINING



01376 556 398



[admin@midsexteachertraining.com](mailto:admin@midsexteachertraining.com)



<https://www.midsexteachertraining.com>

### Upcoming Events

<https://www.midsexteachertraining.com/news/item/coffee-apointments>

### NESTT (Norfolk, Essex, Suffolk Teacher Training)



**Norfolk Essex Suffolk  
Teacher Training**  
nurture • empower • teach



01603 733446



[enquiries@nestt.org.uk](mailto:enquiries@nestt.org.uk)



<https://nestt.org.uk/>

### NIoT @ Harris Initial Teacher Education



0208 253 7758 & 0330 133 6300



[info@harrisschooldirect.com](mailto:info@harrisschooldirect.com) & [itt@niot.org.uk](mailto:itt@niot.org.uk)



<https://niot.org.uk> & <https://www.harrisinstitute.org.uk/>



### NIoT @ Ormiston Teacher Training



01782 733 130



[info@ormistonteachertraining.co.uk](mailto:info@ormistonteachertraining.co.uk)



<https://ormistonacademiestrust.co.uk/work-for-us/ormiston-teacher-training/>



### REAch Teach



01332 473 827



[info@reachteach.org](mailto:info@reachteach.org)



<https://reachteach.org/>

### Teach First



020 3862 8000



[recruitment@teachfirst.org.uk](mailto:recruitment@teachfirst.org.uk)



[www.teachfirst.org.uk/training-programme](http://www.teachfirst.org.uk/training-programme)

### TES Institute



(0) 203 194 3200



[instituteenquiries@tes.com](mailto:instituteenquiries@tes.com)



<https://www.tes.com/institute>

Tes Institute works in partnership to deliver ITT and PGTA Teacher Apprenticeships with the following partners. Find out more about [our partners](#).

**Essex Schools ITT** – Loughton, Havering, Chelmsford and Harlow areas

**Benfleet Team Supporting All** – Benfleet, Basildon, Canvey and Southend

**Thurrock Teacher Training Company** – training across Thurrock

**Plume Initial Teacher Training** – training in Maldon, Chelmsford and North Essex

### West Essex SCITT



020 3325 2809



[vsmullen@efspt.org](mailto:vsmullen@efspt.org)



<https://www.westessexscitt.co.uk>

WEST ESSEX SCITT

### Upcoming Events

Tuesday 10th December 2024 at 2pm on - Get into Teaching Afternoon Tea

<https://www.westessexscitt.co.uk/Taste-of-Teaching-Coffee-Morning-18022019114330/>