



EASTERN REGION TEACHING SCHOOL HUBS  
in collaboration with Initial Teacher Training Providers

# Get Into Teaching Webinar and Facebook Live



THURSDAY 7<sup>TH</sup> DECEMBER 4:30PM



**JULIAN**  
TEACHING SCHOOL HUB



In collaboration with

**Teaching**

Search: Get Into Teaching



**EASTERN REGION TEACHING SCHOOL HUBS**  
in collaboration with Initial Teacher Training Providers

## **Hosts**

Sam Torr – Alpha Teaching School Hub

Kate Atkins – Acting Deputy Director of Julian Teaching School Hub

James Searle – Director of Chiltern Teaching School Hub

Karen Taylor-Paul – Director of Alban Teaching School Hub

Andy Samways – Director of Unity Teaching School Hub

Mark Beyer Woodgate – Director of Chafford Hundred

Angela Rodda – Assistant Director of Saffron Teaching School

Paul Usher – Director of Inspiration Teaching School Hub

# Your local Teaching School Hub

**Alban Teaching School Hub:** Dacorum, Hertsmere, St Albans and Harpenden, Three Rivers, Watford and Welwyn Hatfield

**Alpha Teaching School Hub:** Babergh, Colchester, Ipswich and Tendring

**Chafford Hundred Teaching School Hub:** Basildon, Brentwood, Castle Point, Maldon, Rochford, Southend-on-Sea and Thurrock

**Chiltern Teaching School Hub:** Broxbourne, East Hertfordshire, Luton, North Hertfordshire, Stevenage, Bedford, Central Bedfordshire and Milton Keynes

**Inspiration Teaching School Hub:** Breckland, Great Yarmouth, South Norfolk and East Suffolk (Waveney)

**Julian Teaching School Hub:** Broadland, Kings Lynn, West Norfolk, Norfolk & Norwich

**Saffron Teaching School Hub:** Braintree, Chelmsford, Epping Forest, Harlow and Uttlesford

**Unity Teaching School Hub:** Mid Suffolk, West Suffolk and East Suffolk

# Housekeeping

---

- During the session, you can add a question using the Q&A function
- There will be a Q&A session at the end where questions will be collated and answered



# Why Live and Teach in the Eastern Region



EASTERN REGION TEACHING SCHOOL HUBS  
in collaboration with Initial Teacher Training Providers





# Vibrant Cities and Beautiful Towns



# Food and Drink





# The Great Outdoors





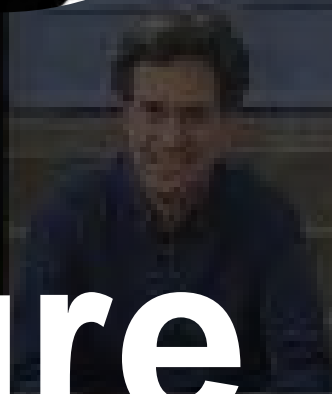


# Sporting Adventures





LONDON GIFT  
BOOK FOR WOMEN  
FREEDOM BOOKS  
CLARENCE DAY  
LONDON BOOKS  
THE WILSON  
MILK & HONEY



BOOK



# Culture





# Transport Links





# Excellent Schools







FOR SALE  
020 7223 7574

# House Prices





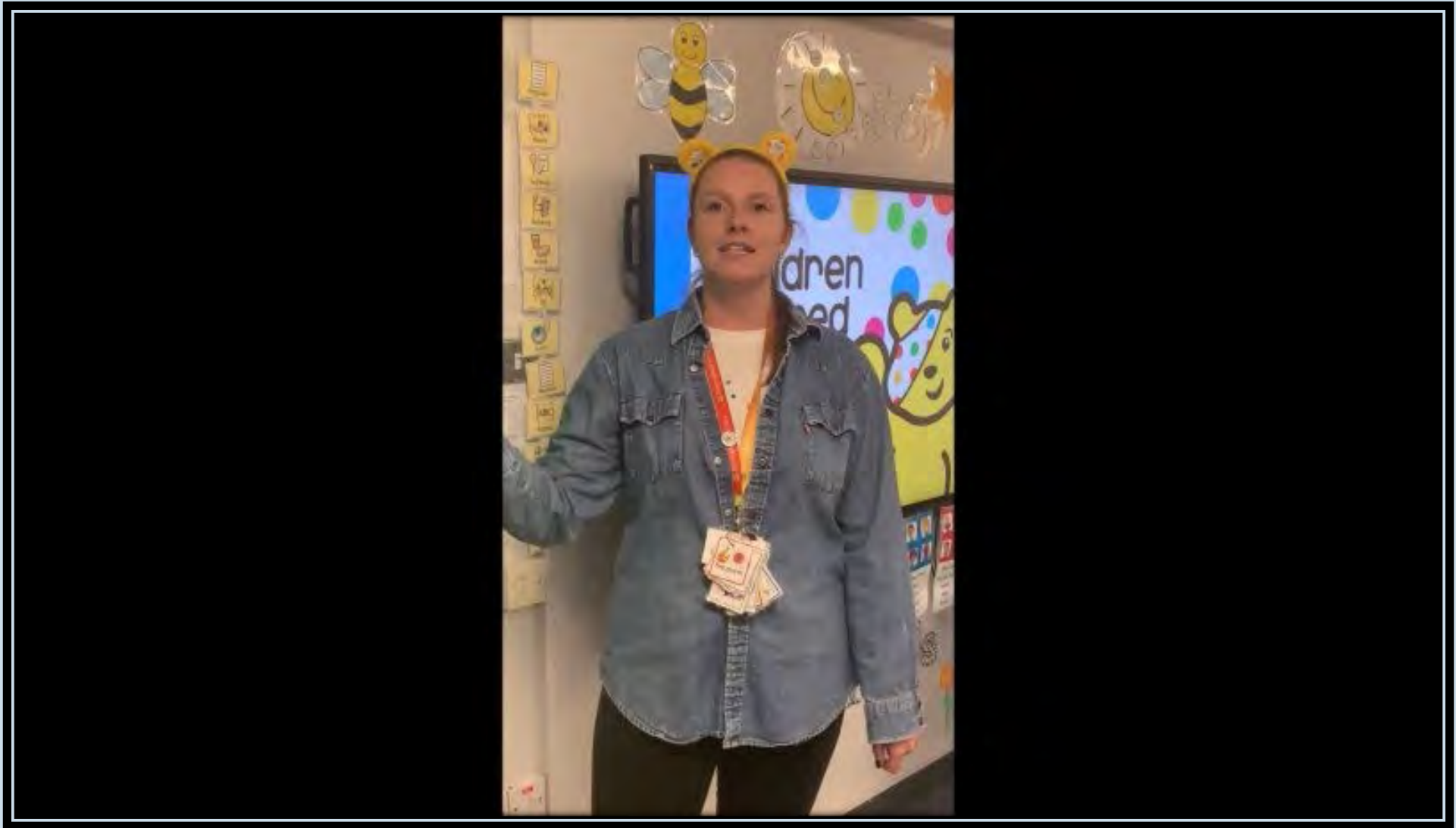
# Daily Life







**Why Teach?**



*Teaching Experiences*



# WHY WE LOVE TEACHING





## Why teach in the Eastern region



**EASTERN REGION TEACHING SCHOOL HUBS**  
in collaboration with Initial Teacher Training Providers





# Your career in teaching





# OUR COMMITMENT TO YOUR CONTINUOUS PROFESSIONAL DEVELOPMENT



The DfE teaching school hub programme provides a national network of 87 school-led centres of excellence for teacher training and leadership development, focused on some of the best schools and multi-academy trusts in the country.

All the knowledge and skills we deliver are drawn from rigorous frameworks (ccf, ecf, npqs) using the best available evidence-base and world-class research in the field. We are quality-assured by our relationship with the DfE, and our Ofsted inspected lead providers. We support everyone in the profession across all settings: early years, primary, secondary, sixth forms, special schools and alternative provision, and we are here for every stage of your career, so you can specialise in your own professional development pathway.



# Neha Patel: Following the golden thread

- Neha joined as an intervention tutor in the English Department confirming her passion for working with young people and supporting them to improve their life chances.
- In 2020 Neha was accepted onto the Harris Initial Teacher Education training programme, a school-based route, that began with a flying start in July leading to her achieving QTS in Secondary English and PGCE with Kingston University in June 2021.
- Neha then progressed onto the Early Career Framework programme with Harris Chafford Hundred Teaching School Hub and UCL. She completed her training and induction against the Teachers' Standards in July 2023.
- In March 2022, Neha was appointed to the role of Head of Year 7 and contributes widely to the school community in terms of her pastoral role and middle leadership
- Neha is still teaching English and now pursuing a specialist 12-month NPQ in Leading Behaviour and Culture with the National Institute of Teaching, East, South and London Campus.
- We wish her well for her future career.



Head of Year 7

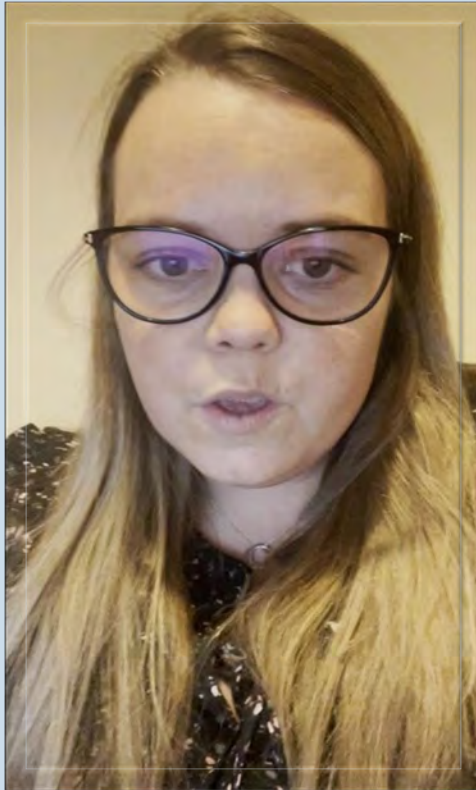
To hear more about Neha's story please visit the Eastern Region Teaching School Hubs Facebook page in collaboration with Initial Teacher Training Providers.



# Neha Patel: Following the golden thread







# Katie Newman

Early Career Teacher 2021-2023  
Mentor 2023-2034



# Lauren Purnell

Early Career Teacher 2022-24

# Janet Symonds

**Current role:** Head of Department,  
SLE(Subject Lead Expert) across the trust

**Teaching offers you a wonderful career.**

*“I have enjoyed my journey into teaching, taking on a vast range of CPD and opportunities that I have been offered.*

*“I love the varied tasks that we encounter every day and love that I can inspire and help people learn a subject that I feel passionate about.”*



# Janet Symonds

## How the Teaching School Hub supported me throughout my career

- **I was inspired by my experiences as a trainee and was pleased to get involved with mentoring trainees and ECTs.** To do this effectively I have received mentor training run by the Teaching School Hub, this has enabled me to effectively support both trainees and ECTs. For the ECT training we are currently using the Early Career Professional Development Programme which has a wealth of valuable information for ECTs and their mentors. It helps us to guide the ECTs through the content in a structured fashion and gives the meetings a good structure and purpose.
- **I am currently SSL (Subject Specific Lead) for Computing for a SCITT** and am enjoying interacting with the Computing trainees, the discussions during these sessions are essential to supporting trainees and we look at specific pedagogy for delivery of Computer Science topics.
- **Undertook NPQ in Senior Leadership through my Teaching School Hub** – Last year I completed my NPQSL which was facilitated by the Teaching School Hub. This was a valuable learning experience for me, the course exposed me to areas of leadership that I had not encountered before and presented many opportunities for me to extend my knowledge and observe expertise in areas which fall outside of my current role and has given me a great insight into the various roles held by SLT
- **Now a NPQ facilitator in Leading Teaching through my Teaching School Hub** – This year I am facilitating the NPQLT. I am extremely excited to be embarking on this and look forward to the opportunity to represent the Teaching School Hub in this way. I am pleased to be able to share my experiences with the cohort and happy that I can provide others with the opportunity to develop their leading teaching skills.



Head of Computing

To hear more about Janet's story please visit the Eastern Region Teaching School Hubs Facebook page in collaboration with Initial Teacher Training Providers.

# **How to Gain School Experience and How We can Help**

## **Five Options**

- 1. Use the DfE Service**
- 2. Approach a School/TA/Tutor**
- 3. Read Blogs/Case Studies**
- 4. Access Online events**
- 5. Internships**

**People approach the teaching profession in different ways, some have a strong idea of where they might belong others discover what is best for them by exploring all their options first.**

**School Experience can help confirm your decisions and give you a more informed outlook on the different routes available.**



# School experience

<https://getintoteaching.education.gov.uk/train-to-be-a-teacher>

Find out about becoming a teacher

Is teaching right for me? How to become a teacher Train to be a teacher Find your training How to apply Non-UK teachers Get help and support

Home > Train to be a teacher

## Train to be a teacher

If you've just graduated, you're studying for a degree or you want to change your career, we can help you understand what training you need to do to get qualified teacher status (QTS).

### If you have or are studying for a degree

Find out how to get qualified teacher status (QTS) through postgraduate teacher training if you have a degree or you're studying for one.

### If you've worked as an unqualified teacher

If you've worked as an unqualified teacher, you may be able to get qualified teacher status (QTS) through an assessment only route.

### If you do not have a degree

You need a degree to get qualified teacher status (QTS). If you're not already studying for one, find out more about undergraduate degree courses.

## Postgraduate teacher training

### How to choose your course

Find out how to choose your postgraduate teacher training course.

### What to expect in teacher training

Find out what your teacher training will be like, what you'll learn, and what classroom experience you'll get.

## Qualifications you can get

### Qualified teacher status (QTS)

You need English qualified teacher status (QTS) to teach in maintained schools in England. Find out how to get QTS through teacher training.

### Postgraduate certificate in education (PGCE)

Having a PGCE as well as qualified teacher status (QTS) can help you develop your teaching skills and knowledge.

## Pay and benefits

### How much do teachers get paid?

Find out the starting salary for a qualified teacher and how your pay could increase during your career.

### What pension does a teacher get?

Learn more about the teachers' pension scheme which is one of the most generous in the country.

## Qualifications and experience

### What qualifications do I need to be a teacher?

Check what qualifications you need to teach in primary, secondary and special schools in England.

### How do I change to a career in teaching?

Use your experience to inspire students and bring your skills and expertise to the classroom.

## Who to teach

### Which age group should I teach?

Explore the different ages and stages of teaching and decide which is right for you.

### How can I teach children with special educational needs?

Find out more about teaching pupils with special educational needs and disabilities.

## School experience

### How do I get experience in a school?

Spending some time in a school can help you understand if teaching is right for you and give you experience to talk about in your application.

### Can I do a teaching internship?

Earn £300 per week and find out what it is really like in the classroom with a teaching internship.

# 1. Using the DfE Service

## Search for school experience

Enter location or postcode  
Grays RM16 6SA

Select search area  
10 miles

Search

## School experience near Grays RM16 6SA

Location or postcode  
Grays RM16 6SA

Search radius  
15 miles

Search

### Education phases

Select all that apply

- ☐ Early years (4)
- ☐ Primary 4 to 11 (6)
- ☐ Secondary 11 to 16 (8)
- ☐ 16 to 18 (7)

### Subjects

Select all that apply

- ☐ Art and design (4)
- ☐ Biology (8)
- ☐ Business studies (5)
- ☐ Chemistry (8)
- ☐ Citizenship (3)
- ☐ Classics (0)

Do you think like a teacher? Try out responding to a [variety of classroom scenarios](#) to see.

Displaying all 14 results

Sorted by distance

### Dilkes Academy

2.0 miles away

**Address** Garron Lane, South Ockendon, Essex, RM15 5JQ

**Education phases** Early years  
Primary (4 to 11)

**Subjects** Not specified

**Experience type** Both **VIRTUAL** and **IN SCHOOL**

[View school details](#)

### School profile

#### Dilkes Academy

The Teach Thurrock Primary Partnership lead by Dilkes Academy is running an innovative ITE programme for both the salaried and PGCE accredited by UCL Institute of Education. This is a school-based training programme where trainees can negotiate their home school.

The course is a one year, school based route, at the end of which you will receive Qualified Teacher Status. Unlike other providers, we offer a full year's employment and a full salary at UOI on the teachers' pay scale. We are very proud of the high quality training and mentoring that is an integral part of both our PGCE and salaried training programmes. Our trainees all receive bespoke training based upon their needs which allows them to achieve their full potential as outstanding practitioners who will be leaders of the future. We offer a £1000 bursary to all of our PGCE trainees and our salaried students do not have to pay course fees. 100% of our trainees have gained jobs in Thurrock schools and many of our early cohort are already on the leadership ladder, positively impacting on the lives of Thurrock children.

#### Contents

- [About our school experience](#)
- [Entry requirements](#)
- [Placement availability](#)
- [Location](#)

### About our school experience

#### Details

Teach Thurrock has developed a Primary Experience Programme, which offers the chance to spend 10 days getting first-hand insight into primary school teaching. Candidates will gain experience of whole class and group teaching in a range of schools in our partnership. There will be opportunities to shadow outstanding teachers and further develop understanding of what teaching is all about.

This provides a great opportunity for eligible candidates (with a 2:2 degree or higher), who intend to start initial teacher training (ITT) in 2019/20 to find out more about the different aspects of the job and gain valuable experience ahead of applying for training.

We also offer School Experience to candidates who wish to apply for a School Direct training place on the Teach Thurrock Primary partnership for 2019/20. Please contact the school on 01708 852128 or email Andrea Parfett at a.parfett@dptsa.org.uk or contactus@dptsa.org.uk for further details.

**Address**  
Garron Lane, South  
Ockendon, Essex, RM15 5JQ

**School phases**  
Early years, Primary (4 to 11)

**DBS check required**  
No, candidates will be  
accompanied at all times.

### Start and finish times

8:15am to 3:30pm - Flexible  
We can offer half days but we do expect an 8.15 arrival time as this allows us to carry out safe guarding procedures.

### Dress code

Business dress, Cover up tattoos

### Teacher training

Dilkes is the lead school for the Teach Thurrock Primary Partnership and our accrediting provider is UCL Institute of Education,

[Find out more about our teacher training](#)

### Links to more information about our school

[Dilkes Academy website](#)  
[Dilkes Academy Get Information About Schools](#)  
[Ofsted report: Dilkes Academy](#)  
[Performance information: Dilkes Academy](#)  
[Teacher training: Dilkes Academy](#)

### Entry requirements

You must:

- Must not have been accepted onto another teacher training course
- Must have a degree

### DBS check required

No, candidates will be accompanied at all times.

### Placement availability

Contact directly to arrange school experience that suits you!

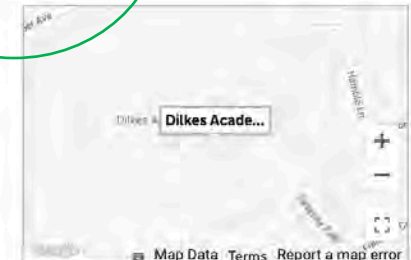
### School experience type

Both **VIRTUAL** and **IN SCHOOL**

### Location

#### Address

Garron Lane,  
South  
Ockendon,  
Essex, RM15  
5JQ



### Parking

Yes - on site parking provided

We have a number of visitors' spaces. If they are full there is parking in the streets surrounding the school.


[Start request](#)

[https://schoolexperience.education.gov.uk/candidates/school\\_searches/new](https://schoolexperience.education.gov.uk/candidates/school_searches/new)

Schools that offer experience visits will typically be partnered with an ITT Lead Provider to provide placements and recruitment opportunities.



# 1. Using the DfE Service

**Department  
for Education**

**TSP**

Welcome to  
**T-Attract** 

T-Attract is designed to provide you with an insight into teaching. T-Attract provides the opportunity to engage with realistic school-based scenarios and engage with feedback from experienced teachers in a low-risk setting. The activity has been developed by researchers at [TSP](#) and is part of the Department of Education's [Get School Experience](#) program.

During this 10-minute activity, you will engage with five video-based scenarios and will be asked to:

- Select which response option, out of three plausible response options, you think would be the most appropriate response for a beginning teacher working in a school.
- You will then receive instant feedback on your responses from experienced teachers.


**Terms & Conditions**  
Please carefully read the [terms and conditions](#) for using this site and the [General Data Protection Regulations](#) (GDPR) statement before agreeing to take part in this activity.


I have read and agree to the GDPR statement and the Terms and Conditions of use.

Please enter your full name


Start

Put your  
personality  
to the test!

**Department  
for Education**

**TSP**

Scenario 1



00:45

Please select which response option you think would be most appropriate for a beginning teacher to do

Stop the meeting, telling the parents that they have used their allocated amount of time for parents evening

Arrange another appointment with the parents to discuss their concerns further

Explain to the parents that you have another appointment and the parents are waiting

Organisation & Planning

Organisation and planning is important in many professions and is central to effective teaching. As a teacher, you could use these skills to plan creative and engaging lessons and resources that bring your subject to life for your students, and to help organise school and community events or extra-curricular activities.

Mindset

As a teacher, no day is ever the same! Teaching involves being flexible in an ever-changing environment, and there are always plenty of new learning opportunities. Teachers with a growth mindset see challenges as an opportunity to learn. They instil a love of learning in their students and actively seek out opportunities to learn and develop themselves. They think carefully about the language they use when interacting with students and have high expectations for all. They reward effort, not just academic progress.

Empathy & Communication


Effective communication is important in most professions, especially teaching where you are required to express ideas and topics clearly. As a teacher, you could use these skills to express your passion for your subject to students and build strong relationships with students, parents/guardians, and colleagues.

Emotion Management

Working as a teacher, you may encounter unexpected questions or situations that require you to think on your feet and be creative. This is a core aspect of teaching and is part of the reason why the job is so varied and interesting. Good emotion management skills enable you to view events as positive opportunities, and can help you to take a proactive approach in unexpected situations. These skills are particularly beneficial in promoting learning and creating a positive, safe, and enjoyable classroom environment for students. Positive emotional engagement can lead to a passion for teaching, and excitement and satisfaction with the career choice.

Excellent fit with teaching

Your judgment and decision-making match very closely with that of experienced teachers. You think like a teacher and could be well-suited to a career in teaching!



## 2. Approaching a School

**Where:** If you visit your local Teaching School Hub or Local Authority website you will be able to get a list/map of all the schools in the area.

Alpha Teaching School Hub	<a href="https://www.alphatsh.org">https://www.alphatsh.org</a>
Alban Teaching School Hub	<a href="https://albantsh.co.uk/">https://albantsh.co.uk/</a>
Saffron Teaching School Hub	<a href="https://www.saffronteachingschoolhub.net">https://www.saffronteachingschoolhub.net</a>
Chafford Hundred Teaching School Hub	<a href="https://www.harrischaffordteachingschoolhub.co.uk">https://www.harrischaffordteachingschoolhub.co.uk</a>
Chiltern Teaching School hub	<a href="https://www.teaching-school.co.uk">https://www.teaching-school.co.uk</a>
Unity Teaching School Hub	<a href="https://www.unityteachingschoolhub.net/">https://www.unityteachingschoolhub.net/</a>
Inspiration Teaching School Hub	<a href="https://www.inspirationteachingschoolhub.org/">https://www.inspirationteachingschoolhub.org/</a>
Julian Teaching School Hub	<a href="https://www.thejulian-tsh.org.uk/">https://www.thejulian-tsh.org.uk/</a>

**Who:** When you call/email school reception you would typically want to speak to the ITT Professional Tutor or Lead Mentor or the subject/phase leader.

**When:** These members of staff often have responsibilities until 3:30pm or later but may be able to get back to you quicker via email first. Schools will be unlikely to take visitors during busy assessment periods in May and June, so try and give them plenty of notice.

**What:** Try to be clear about what you want to see/learn from your visit.

Remember this will be the school's first impression of you so treat it like part of your job interview.



### 3. DfE Advisors & Blogs

Many ITT providers expect prospective trainee teachers to have completed their school experience before attending an interview.

#### School experience helped me decide to switch

Published 10 February 2020  
By Zainab Kasmani

I graduated with a degree in English language and communication. I wasn't sure what I wanted to do, but I knew I wanted to travel. I completed a starter course and went to teach English abroad.

When I returned I worked in the NHS for 4 years, but the job was not for me.

I volunteered at a local primary school for 2 days a week and from the moment I walked into my first class, it felt very natural to be interacting with children.

In my previous role I learnt a lot about diversity issues. I had dealt with situations where language had been a barrier to people accessing services. This experience has really helped me to support pupils from a wide range of backgrounds in their learning and development.

Teaching is a lot more vibrant than my previous career. Schools offer a very dynamic working environment. You encounter problems, as you would in any career but you have the support of colleagues to try new approaches and techniques until you find the right solution. This really helps you develop as a teacher.

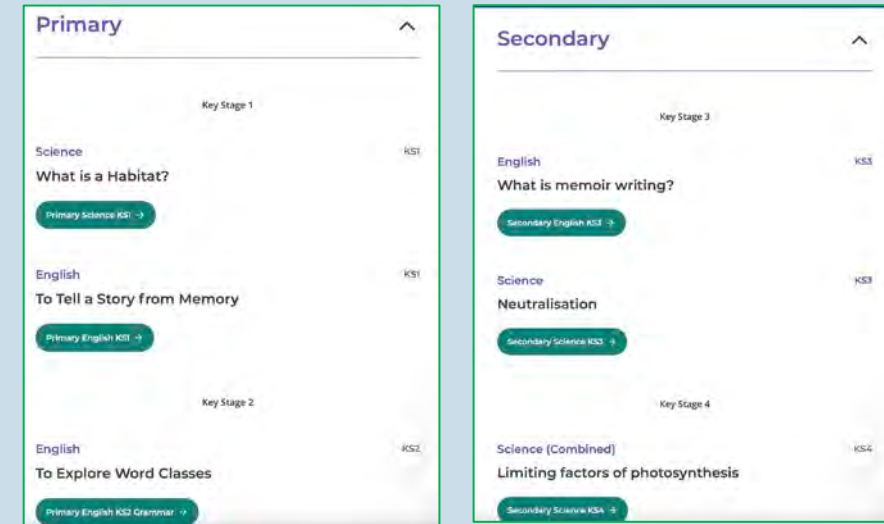
Find out how you can [get school experience](#) to discover if teaching is the right career for you.

Candidates should be able to discuss school visits and/or work experience and will need:

- The ability to develop effective relationships with relevant stakeholders: children, their parents and carers, colleagues and peers;
- Strong organisational and communication skills;
- To be positive and proactive;
- A commitment to securing the best education for all children;
- Determination and energy;
- High standards of literacy, numeracy and personal presentation.



### 4. Online Events



<https://teachers.thenational.academy/lessons-for-itt>

Available in foundation subjects at both primary and secondary phases, the videos are formed in pairs of:



An Oak National Academy lesson



An ITT lesson video that deconstructs the Oak National Academy lesson



EASTERN REGION TEACHING SCHOOL HUBS  
in collaboration with Initial Teacher Training Providers

# 5. Internships

## Get teaching experience with an internship

If you're studying for an undergraduate or master's degree and interested in teaching, an internship could help you to understand what it's really like in the classroom.

Internships last 3 weeks, start in June or July and you'll be paid £300 per week.

Find out how to apply, including details of teaching internship providers in each region, further down this page.

**"The support I had was amazing, I was treated like a member of staff, and I was welcomed by everyone."**

Chloe, former teaching intern

### Who can apply

You'll need to be studying for a related undergraduate or master's degree and interested in teaching one of the following:

- chemistry
- computing
- languages
- maths
- physics

If you're interested in teaching a different subject, you can still [get school experience](#) and find out what it's like to be in a classroom.

**"Towards the end of the internship, I was able to teach parts of lessons that I had planned, and I really started to find my feet at the front of the classroom."**

Ben, former teaching intern

### What you'll experience

You'll get a feel for what life as a teacher is like. Your internship will give you an opportunity to:

- shadow experienced teachers and observe lessons
- jointly plan and teach lessons
- get one-to-one guidance from outstanding classroom teachers and subject specialists
- see what school life is like for a teacher outside of the classroom

**"I observed lessons, provided 1:1 support to pupils, and even taught classes! The internship was particularly beneficial in providing a unique insight into teacher training and the application process."**

Carly, former teaching intern

<https://getintoteaching.education.gov.uk/is-teaching-right-for-me/teaching-internship-providers>



# Now Teach

## SCHOOL EXPERIENCE LIBRARY

### What are schools like?

You may not have spent much time in a school since you were a teenager, so getting an idea of what state secondary schools are like is really important.

#### ► Everything you need to know about teaching

This is a really helpful and concise introduction to the English school system from academics to qualifications by the education world's weekly newspaper, TES.

#### ► A Working Life: The Secondary School Teacher

Insightful view into the ups and downs of a day in a science classroom full of teenagers.

#### ► The School Day

Now Teachers describe their busy day around the school as career-change trainees.

#### ► Clips from BBC documentary 'School'

Now Teachers were full of praise for this. The full series is not available right now but clips from each episode give a good introduction.

#### ► Educating Essex

Very different from 'School' in tone, while still giving a full picture of school life and working with teenagers.



<https://www.youtube.com/watch?v=3OqEjgJrTZ4>

### How are lessons delivered?

These videos show what your lessons could look like. There are a variety of teaching styles and these lessons are more 'teacher-led' from the 'teacher' instead of students working together, but you will find out more about your school's teaching culture on interview.

Students on Key Stage 3 are aged between 11 and 14; Key Stage 4 students are aged between 14 and 16.

#### ► Science lesson Key Stage 4

#### ► Maths lesson Key Stage 3

#### English lesson:

##### ► Key Stage 3

##### ► Key Stage 4

#### History lesson:

##### ► Key Stage 3

##### ► Key Stage 4

#### ► Geography lesson Key Stage 3

#### ► Spanish lesson Key Stage 3

#### ► French lesson Key Stage 3

#### ► Computer Science - teacher case study

### WHAT ARE SCHOOLS LIKE?



#### Online Lessons

Teachers across the UK have been working hard to produce online lessons for young people at home during the lockdown. These are obviously very different from classrooms but will give you an idea of lesson structure and content.

#### ► Oak National Academy

An online school created in response to the lockdown, the lessons are based on videos and quizzes for most subjects and age groups. They have also produced videos for trainee teachers where

#### ► BBC Bitesize

The BBC is providing daily lessons for children aged 5 to 16 in a range of subjects and will include some famous faces in coming weeks.

#### ► Curriculum

If you want to get an in-depth view of your subject's curriculum and what you will teach, Seneca Learning includes resources for curriculum and student revision.

## What is teacher training like?

There are different types of teacher training but Now Teach trainees have many shared experiences as career-changers. These are some of their stories.

#### ► Could Do Better

Radio 4 series about Now Teach co-founder Lucy Kellaway's first year. It's honest and a great listen.

#### ► How to retrain as a teacher

Short film by the *Financial Times* about a Now Teach trainee's first year and her decision to leave her job.

#### ► What surprised you about teaching?

Near the end of their first year, Now Teachers share their thoughts.

## How does behaviour management work?

Once they are in school, Now Teachers say student misbehaviour is not the huge challenge they feared it would be. Schools treat behaviour as a priority and your training equips to calm and manage classes. These links explain some of the tools you will be given as you train.

#### ► School Culture - How School Leaders Can Optimise Behaviour

From the Government's school behaviour expert, this gives a great introduction and then delves into detail. We recommend pages 12-17 and 22-29.

#### ► 10 Easy Behaviour Management Tips For Lesson Success

Short article explaining some of the simple things teachers do to make sure students have the right environment for learning.

#### ► Classroom Management Strategies To Take Control Of Noisy Students

A teacher gives his personal reflections on how he learned to calm students down before the lesson even starts.

## Education: the bigger picture

#### ► The UK Education System

We put this document together to help convey some of the key things you should know before you join.

#### ► Talks from inspirational teachers

A selection of Ted Talks from teachers around the world

#### ► 'Experiences of poverty and educational disadvantage' by Donald Hirsch for the Joseph Rowntree Foundation.

A key report in explaining the link between poverty and educational achievement

#### ► Closing the Gap by the EEF

Report explaining the gap in achievement between disadvantaged children and their wealthier peers

#### ► What if... we really wanted to further social mobility through education?

The 2019 Education Lecture from UCL Institute of Education.



EASTERN REGION TEACHING SCHOOL HUBS  
in collaboration with Initial Teacher Training Providers

# ***Where can you find the Eastern Region Initial Teacher Training Providers***

*Scan the  
QR code*



**EASTERN REGION TEACHING SCHOOL HUBS**  
in collaboration with Initial Teacher Training Providers







EASTERN REGION TEACHING SCHOOL HUBS  
in collaboration with Initial Teacher Training Providers

# How to Apply for Initial Teacher Training



In collaboration with

**Teaching**

Search: Get Into Teaching

# The Department for Education can offer useful advice on how to apply

## How to apply for teacher training

If you want to apply for teacher training, we can help you understand what to put in your application and how the process works.



### Teacher training application

Find out what you need to include in your teacher training application and when to apply.

### Teacher training personal statement

Find out what to include in your teacher training personal statement.

### Teacher training references

Find out which teacher training references you need to provide and what they should include.

### Teacher training interviews

Find out how to prepare for your teacher training interviews.



**EASTERN REGION TEACHING SCHOOL HUBS**  
in collaboration with Initial Teacher Training Providers



# The Department for Education can offer useful advice

- ✓ **A good place to start for general information on becoming a teacher is the DfE Get into Teaching website.** This offers good general information, from how to set up a school experience visits, to seeing what primary/secondary school life is like, to checking if you have the correct qualifications to apply for a teacher training course, to how to apply for a place on a teacher training course. **There is also a step-by-step guide to the process, from thinking about training to teach through to application.**
- ✓ **If you prefer to speak directly to local teacher training providers for more information, you might be interested in the Department for Education's virtual and face-to-face Train to Teach events.** There are a range of events hosted from around the country that will showcase local providers in your area, and you will be able to book a slot to speak to the providers that you are interested in.
- ✓ **You can search for local train to teach information events here: <https://getintoteaching.education.gov.uk/events>**
- ✓ **The DfE also offers a useful tailored advice service which provides you with personalised advice from a team of telephone agents who can talk you through training options, the application process and your next steps. You can register for this here.**



EASTERN REGION TEACHING SCHOOL HUBS  
in collaboration with Initial Teacher Training Providers

# How to apply - eligibility

To train with most providers in the UK, you need:

- ✓ A **degree** from a UK HEI or equivalent qualification
- ✓ **GCSEs at Level 4** (or equivalent) in Mathematics, Science and English
- ✓ The ability to **communicate clearly** in written & spoken **standard English**
- ✓ To be **fit to teach** and **DBS checked**
- ✓ **Secondary applicants** should ideally have a **degree that is 50% relevant** to the subject in which they wish to train to teach





# How to apply — the DfE's portal

[Apply for teacher training -  
GOV.UK \(www.gov.uk\)](https://www.gov.uk/apply-for-teacher-training)

- DfE '**Find**' and '**Apply**' services
- Advised to check a number of things before applying

## Sections on:

1. **Personal** information
2. **Contact** information
3. **Course** details
4. **Criminal** record & **professional** conduct
5. **Work history** & unpaid **experience**
6. **Qualifications**
7. **Personal statement**; "Why do you want to be a teacher?" & "Why are you suited to teach your subject(s) or age group?"
8. **Further information** e.g. disability support / interview needs



# Statements

Why do you want to be a teacher?	Why are you suited to teach your subject(s) or age group?
<ul style="list-style-type: none"><li>• What is it about children's learning that appeals to you?</li><li>• Motivation for training to teach now</li><li>• Particular reference to any experience working in or observing lessons in schools</li></ul>	<ul style="list-style-type: none"><li>• What appeals to you about teaching this subject / age group?</li><li>• Relevant transferable skills or experiences</li><li>• Demonstrate knowledge of the subject (e.g. national curriculum)</li></ul>





It is my work with the Escape Animal Sanctuary during my gap year that has driven me towards wanting to teach. Being one of two Conservation leaders has developed transferable skills for teaching. I have worked with the animal sanctuary schools project where I have gained skills such as having the confidence to talk to schools to deliver an assembly. Working with a team of volunteers has prepared me for working in a Secondary school where I have worked with a range of people to identify different personalities, strengths and weaknesses. Some of the people that I work with need support and guidance when it comes to confidence, and I feel that my personal and understanding manner has enabled them to flourish and this is what I would look for in teaching pupils.

#### What I look for is this:

1. Is it clear why they want to teach and what they can bring to the classroom
2. Do they seem to like working with children (experience etc.)
3. Are they interesting - experience, hobbies (what else can they bring to the role?)
4. Do they know what is involved in being a teacher (experience, ideas of what it is like)

I have always wanted to become a physical education teacher. I have a drive and passion for sport and in every sport, I have ever played I am determined to succeed to achieve my goal. Teaching is my goal because I have a real desire to educate students in sport and have a real impact in contributing to their future careers.

I am a graduate of Loughborough where I have played basketball at a National Level. I am currently working in a private school as a teaching assistant where I have been seconded to the PE department to run after school clubs, planning lessons to cover staff and dealing with pastoral issues. I understand the need for differentiated lessons to allow all children to progress at all key stages in particular with pupils with SEND.

I have a passion for a range of sports including basketball, trampolining and cheerleading. I helped run a cheerleading club whilst at University. This gave me a strong foundation for teaching as I am able to control large numbers of children by using verbal clues and communication.

During my studying at University, I spent some time working with a Primary school where I had the opportunity to lead physical education lessons. Following this I continued to volunteer at a local state Secondary School where I assisted with netball to key stage three and 1 to 1 GCSE revision lessons. I continued to work as a teaching assistant for the PE staff and I have contributed to schemes of work.

I have a good understanding of assessment in PE, and I can adapt my lessons around the national curriculum. I am looking forward to learning more about the curriculum to complete my SKITT/PGCE.



EASTERN REGION TEACHING SCHOOL HUBS  
(in collaboration with Initial Teacher Training Providers)

# Subject Knowledge Enhancement (SKE)

- A provider may make undertaking an SKE course as a condition of your offer because they view that you need to increase your subject knowledge.
- Vary between 8 and 28 weeks; full time or part time.
- Can be completed alongside ITT courses but must be completed before QTS can be recommended and awarded.
- Online & face to face or a mixture of both.
- SKE funding can be used to refresh language skills in an additional language.
- Programme costs are funded and there is some Bursary funding available for some subjects.



# Some things to consider...

There are many routes into teaching. It is important to pick the **right course** and **training provider** for you. Consider the following:

- What **age range** do you want to teach?
  - What can you **make work financially**?
  - Can you train **full time**, or **do you need part time**?
  - Do you want to gain a **PGCE** or **masters** credits?
  - How far can you **travel** to train?
  - Do you want to **specialise** e.g., in early years/subject/phase?
  - Do you **need some school experience first**?
- Talk to your local providers and find out more
- Visit your local Teaching School Hub website for more information on the ITT providers in your area.



EASTERN REGION TEACHING SCHOOL HUBS  
in collaboration with Initial Teacher Training Providers



Please complete this short form if you would like your ***local*** Teaching School Hub to contact you regarding gaining school experience



[Support with school experience \(office.com\)](#)

*Please give us some information on what sort of school experience you would like, and we will ensure you are contacted by the most appropriate Teaching School Hub who will support you with setting this up.*



EASTERN REGION TEACHING SCHOOL HUBS  
in collaboration with Initial Teacher Training Providers



EASTERN REGION TEACHING SCHOOL HUBS  
in collaboration with Initial Teacher Training Providers

# LIVE Q&A Session

T



In collaboration with

**Teaching** 

Search: Get Into Teaching



"Being integrated into the schools so early meant I was able to feel like part of the team."

"The unwavering support was the best thing about the programme and it got me through the training year. There was always somebody at the end of the phone or email when I was not feeling my best or needed guidance."

"I travelled across the country to come here because I felt the in-school experience on offer was the best way for me to become a teacher."

"My teacher trainee experience is one that I will never forget and my aim is to pass on this experience to the trainees I now work with."

"I can learn something in the weekly core training and apply it in the classroom the next day."



EASTERN REGION TEACHING SCHOOL HUBS  
in collaboration with Initial Teacher Training Providers

# Testimonials